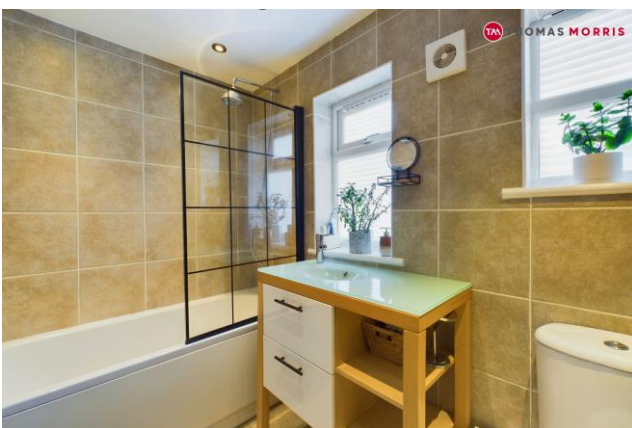




 **THOMAS MORRIS**

3 Bridge Cottages, High Street, Bury, PE26
2NR

 **THOMAS MORRIS**



Asking Price: £230,000

Freehold

High Street, Bury, PE26 2NR

- Period Cottage
 - End of Terrace
 - Kitchen/Diner
 - Living Room
 - Two Bedrooms
 - Off Road Parking
 - Garden
 - Non-Estate Location
 - Freehold
 - Energy Rating: C/72
-

This quaint period end of terrace cottage is located in a non estate position in the popular village of Bury with off road parking for two cars, a rear garden and panoramic views of the golf course.

Upon approach into the side entrance hall, with double storage cupboard, leading to the downstairs bathroom, kitchen diner and a lounge. Upstairs are two well appointed double bedrooms. both with built-in storage.

Gas combination boiler for heating & domestic hot water can be controlled remotely by means of a Google nest thermostat services the property along with the majority of windows being double glazed.

Council Tax Band A Huntingdon District Council
Draft Details Only

Accommodation

Hallway

Living Room 11'6" x 12'8" (3.5m x 3.86m).

Kitchen/ Diner

Bathroom

Landing

Bedroom One 11'4" x 11'5" (3.45m x 3.48m).

Bedroom Two 11'4" x 9'8" (3.45m x 2.95m).



To conform with government Money Laundering Regulation 2017, we are required to confirm the identity of all prospective buyers. We use the services of a third party, Lifetime Legal, who will contact you directly at an agreed time to do this. They will need the full name, date of birth and current address of all buyers. There is a nominal charge of £60 including VAT for this (for the transaction not per person), payable directly to Lifetime Legal. Please note, we are unable to issue a memorandum of sale until the checks are complete.



Thomas Morris

9 Great Whyte, Ramsey, Cambridgeshire, PE26

1HE

T: 01487 814666

enquiries.ramsey@thomasmorris.co.uk

Visit all our properties at
thomasmorris.co.uk



We may refer you to recommended providers of ancillary services such as Conveyancing, Financial Services, Insurance and Surveying. We may receive a commission payment fee or other benefit (known as a referral fee) for recommending their services. You are not under any obligation to use the services of the recommended provider. The ancillary service provider may be an associated company of Thomas Morris.

Disclaimer

Every attempt has been made to ensure accuracy, however these property particulars are approximate and for illustrative purposes only. They have been prepared in good faith and they are not intended to constitute part of an offer of contract. We have not carried out a structural survey and the services, appliances and specific fittings have not been tested. All photographs, measurements, floor plans and distances referred to are given as a guide only and should not be relied upon for the purchase of any fixture or fittings. Lease details, service charges and ground rent (where applicable) are given as a guide only and should be checked prior to agreeing a sale.

Thomas Morris is a trading name, independently owned and operated under licence from LSLi Limited, by AIG (SLB) Ltd (company number 14716652), registered in England at 5 Brooklands Place, Brooklands Road, Sale, Cheshire, United Kingdom, M33 3SD.

