



5 Spinney Way, St. Ives, PE27 3YX



Guide Price: £270,000

Freehold

Spinney Way, St. Ives, PE27 3YX

- Mid Terraced Home
- Extended Accommodation
- Three Bedrooms
- Two Reception Rooms
- Enclosed Rear Garden
- Single Garage on Nearby Block
- Walking Distance to Amenities
- No Forward Chain
- Freehold
- Energy Rating: D/58

A three-bedroom mid-terrace home, extended to provide flexible accommodation. Situated in this sought-after area of St. Ives only a short walk to local amenities, doctor's surgery, both primary and secondary schools and the Guided Bus stops, providing convenient access into Cambridge.

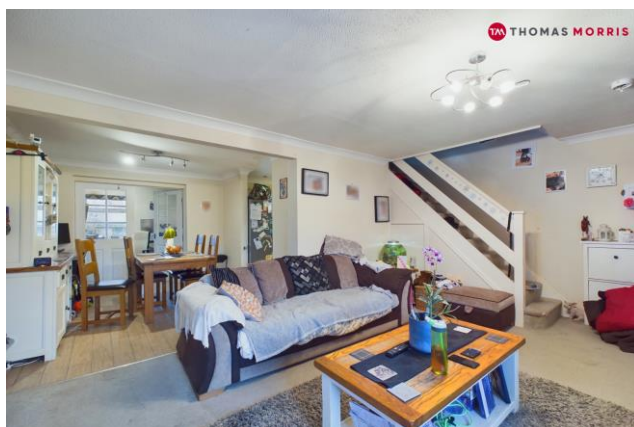
Accommodation comprises - entrance hall, cloakroom/WC, living room opening to dining room, kitchen, study and utility room.

Upstairs offers three bedrooms and family bathroom.

Further benefits include an enclosed rear garden and single garage on nearby block.

Huntingdonshire District Council
Council Tax Banding C.

These details are subject to approval.



Accommodation

Entrance Hall

Cloakroom

Living Room 17'11" x 14'6" (5.46m x 4.42m).

Dining Room 10'4" x 9'4" (3.15m x 2.84m).

Kitchen 9'11" x 8' (3.02m x 2.44m).

Utility Room 8'5" x 7'3" (2.57m x 2.2m).

Study 7'5" x 6'10" (2.26m x 2.08m).

Landing

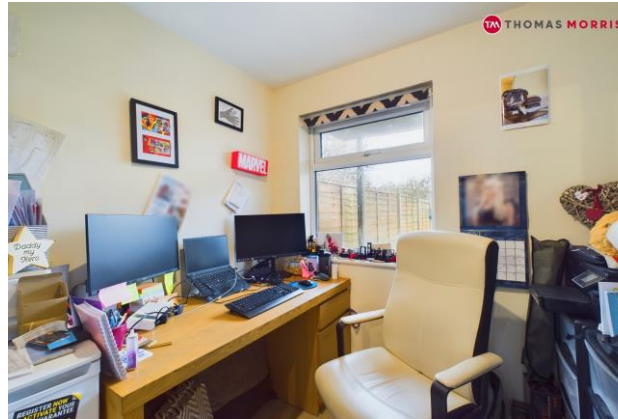
Bedroom 1 14'10" x 10'1" (4.52m x 3.07m).

Bedroom 2 10'8" x 9'10" (3.25m x 3m).

Bedroom 3 9'8" x 7'7" (2.95m x 2.3m).

Family Bathroom

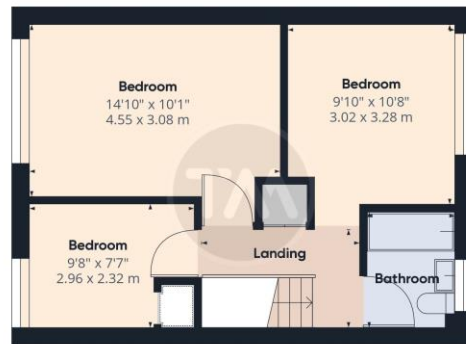
Single Garage



To conform with government Money Laundering Regulation 2017, we are required to confirm the identity of all prospective buyers. We use the services of a third party, Lifetime Legal, who will contact you directly at an agreed time to do this. They will need the full name, date of birth and current address of all buyers. There is a nominal charge of £60 including VAT for this (for the transaction not per person), payable directly to Lifetime Legal. Please note, we are unable to issue a memorandum of sale until the checks are complete.



Ground Floor



Floor 1

Approximate total area⁽¹⁾
1002.09 ft²
93.1 m²

(1) Excluding balconies and terraces

While every attempt has been made to ensure accuracy, all measurements are approximate, not to scale. This floor plan is for illustrative purposes only.

GIRAFFE 360

Thomas Morris

24-26 Crown Street, St. Ives, Cambridgeshire,
PE27 5AB

T: 01480 468066

stivesenquiries@thomasmorris.co.uk

Visit all our properties at
thomasmorris.co.uk

We may refer you to recommended providers of ancillary services such as Conveyancing, Financial Services, Insurance and Surveying. We may receive a commission payment fee or other benefit (known as a referral fee) for recommending their services. You are not under any obligation to use the services of the recommended provider. The ancillary service provider may be an associated company of Thomas Morris.

Disclaimer

Every attempt has been made to ensure accuracy, however these property particulars are approximate and for illustrative purposes only. They have been prepared in good faith and they are not intended to constitute part of an offer of contract. We have not carried out a structural survey and the services, appliances and specific fittings have not been tested. All photographs, measurements, floor plans and distances referred to are given as a guide only and should not be relied upon for the purchase of any fixture or fittings. Lease details, service charges and ground rent (where applicable) are given as a guide only and should be checked prior to agreeing a sale.

Thomas Morris is a trading name, independently owned and operated under licence from LSLi Limited, by AIG (SLB) Ltd (company number 14716652), registered in England at 5 Brooklands Place, Brooklands Road, Sale, Cheshire, United Kingdom, M33 3SD.

