



34 Overcote Lane, Needingworth  
PE27 4TU





Offers Over: £325,000

Freehold

Overcote Lane, Needingworth, PE27 4TU

- Bungalow
- Sought-After Village Location
- Three Bedrooms
- Open Lounge/Diner
- Sunroom
- Off-Road Parking
- Close to Amenities
- No Forward Chain
- Freehold
- Energy Rating: TBC

Introducing a charming 3-bedroom link-detached bungalow nestled in a peaceful village setting. Spanning a generous 950 sq ft, this homely property offers a tranquil retreat with a cosy atmosphere.

Enjoy the serenity of the surroundings and appreciate the quiet ambiance that this lovely home provides.

The property boasts a well-maintained garden, perfect for relaxing or entertaining guests, as well as convenient off-street parking for added convenience.

With its desirable location and comfortable living spaces, this bungalow presents an ideal opportunity for those seeking a peaceful lifestyle in a welcoming community.

Don't miss out on the chance to make this delightful property your own.

Contact us today to arrange a viewing and experience the charm of village living at its best.

Huntingdonshire District Council. Tax Band B.  
These details are subject to approval.





# Accommodation

## Entrance Hall

Lounge/Diner 12'1" x 22'11" (3.68m x 6.99m).

Sunroom 6'10" x 18'5" (2.08m x 5.61m).

Kitchen 11'11" x 18'5" (3.63m x 5.61m).

## Hallway

## Shower Room

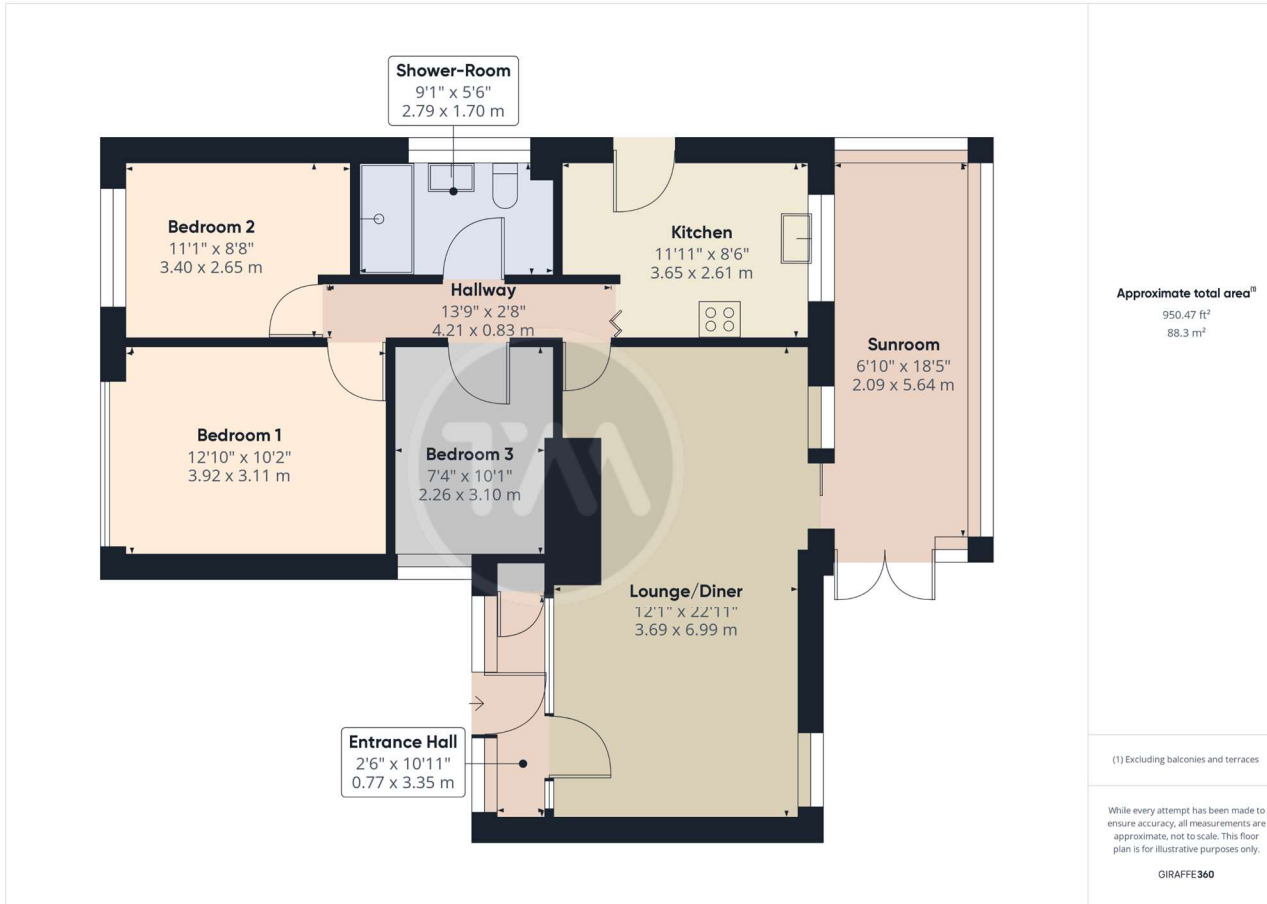
Bedroom 1 12'10" x 10'2" (3.9m x 3.1m).

Bedroom 2 11'11" x 8'8" (3.63m x 2.64m).

Bedroom 3 7'4" x 10'1" (2.24m x 3.07m).



To conform with government Money Laundering Regulation 2017, we are required to confirm the identity of all prospective buyers. We use the services of a third party, Lifetime Legal, who will contact you directly at an agreed time to do this. They will need the full name, date of birth and current address of all buyers. There is a nominal charge of £60 including VAT for this (for the transaction not per person), payable directly to Lifetime Legal. Please note, we are unable to issue a memorandum of sale until the checks are complete.



**Thomas Morris**  
24-26 Crown Street, St. Ives, Cambridgeshire,  
PE27 5AB  
T: 01480 468066  
stivesenquiries@thomasmorris.co.uk

Visit all our properties at  
[thomasmorris.co.uk](http://thomasmorris.co.uk)

We may refer you to recommended providers of ancillary services such as Conveyancing, Financial Services, Insurance and Surveying. We may receive a commission payment fee or other benefit (known as a referral fee) for recommending their services. You are not under any obligation to use the services of the recommended provider. The ancillary service provider may be an associated company of Thomas Morris.

#### Disclaimer

Every attempt has been made to ensure accuracy, however these property particulars are approximate and for illustrative purposes only. They have been prepared in good faith and they are not intended to constitute part of an offer of contract. We have not carried out a structural survey and the services, appliances and specific fittings have not been tested. All photographs, measurements, floor plans and distances referred to are given as a guide only and should not be relied upon for the purchase of any fixture or fittings. Lease details, service charges and ground rent (where applicable) are given as a guide only and should be checked prior to agreeing a sale.

Thomas Morris is a trading name, independently owned and operated under licence from LSLi Limited, by AIG (SLB) Ltd (company number 14716652), registered in England at 5 Brooklands Place, Brooklands Road, Sale, Cheshire, United Kingdom, M33 3SD.

